



A Tyco International Company

## High Pressure Carbon Dioxide

## Discharge Nozzle – Type “A”

### Description

The type “A” nozzle is used primarily for local application and is also listed and approved for use as a total flooding nozzle. The nozzle shell is drawn sheet steel and the insert is brass; the nozzle is painted red. The “A” type nozzle is available in orifice sizes ranging from 1 through 7. The discharge rate of the nozzle depends on the orifice size and nozzle pressure. The area covered in local application is

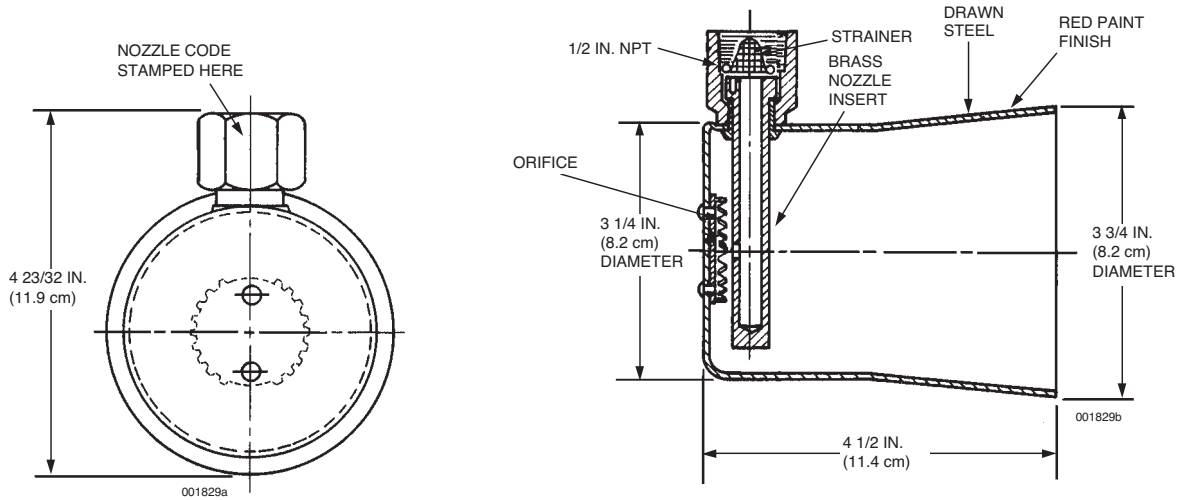
dependent on the discharge rate of the height of the nozzle above the surface being protected. Height range: 18 to 72 in. (46 to 183 cm). Discharge rate: 14 to 48.5 lb per minute (6 to 22 kg per minute). See carbon dioxide design manual for area coverage and required flow rates.

Component	Material	Shell Finish	Thread Size/Type	Orifice Size	Approvals
Type “A” Nozzle	Shell: Steel Insert: Brass Strainer: Monel	Red Enamel	1/2 in. NPT Female	1 through 7	UL (EX-2968); Listed for use with FM Approved systems

Shipping Assembly Part No.	Description	Orifice Code
426103	Type “A” nozzle with strainer	1 – 3
426104	Type “A” nozzle	3.5 – 7

**Note:** When ordering, specify orifice code required: Example – Part No. 426103 – 2.5.

### Carbon Dioxide Type "A" Discharge Nozzle with Strainer



### Carbon Dioxide Type "A" Discharge Nozzle

