

High Pressure Carbon Dioxide

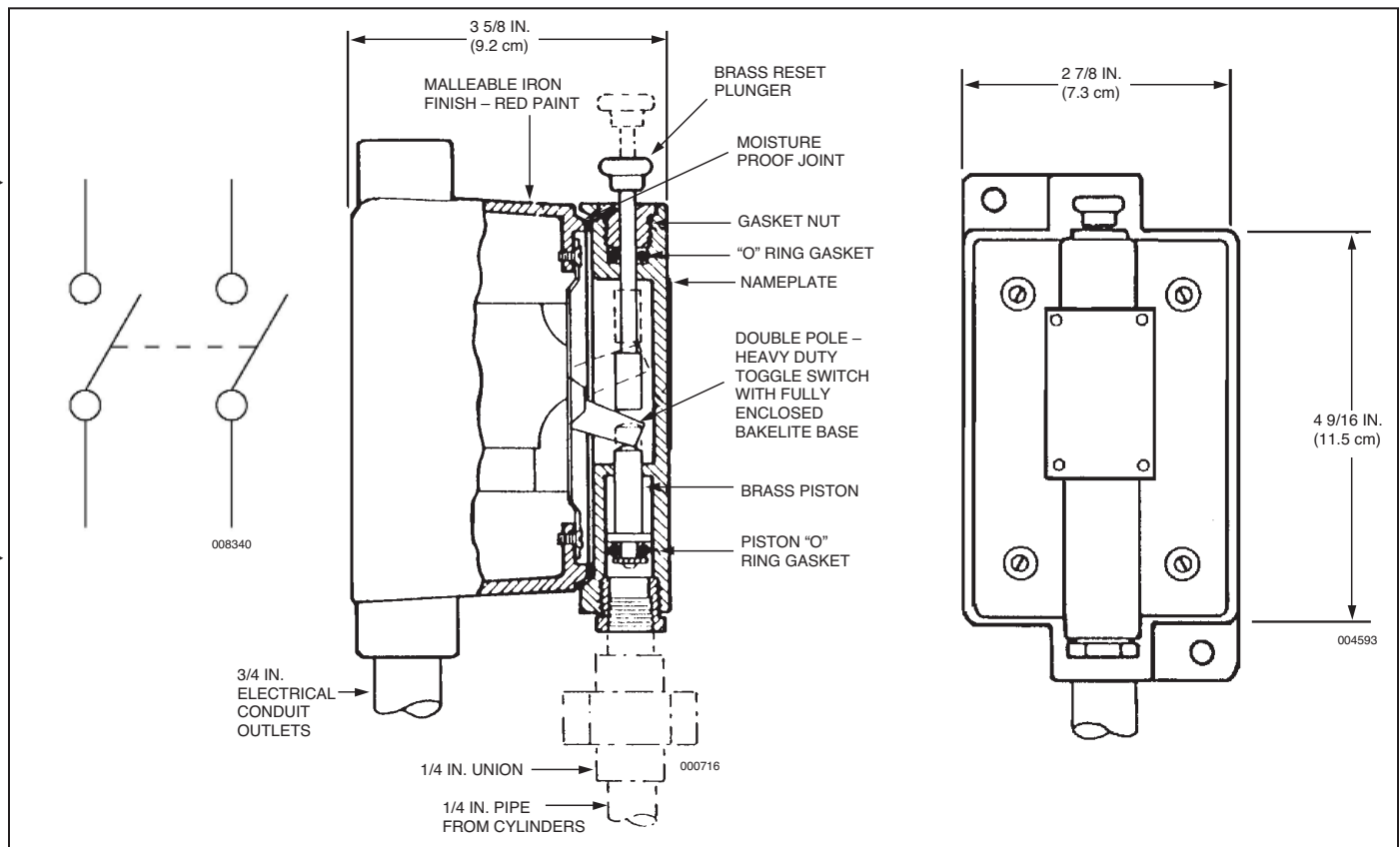
Pressure Switch – DPST

Description

- ▶ The pressure switch is operated by the carbon dioxide pressure when the system is discharged. The pressure switch can be used to open or close electrical circuits to either shut down equipment or turn on lights or alarms. The double pole, single throw (DPST) pressure switch is constructed with a gasketed, water tight housing. The housing is constructed of malleable iron, painted red. A 1/4 in. NPT pressure inlet is used to connect the 1/4 in. pipe from the carbon dioxide system. Minimum operating pressure is 50 psi (3.5 bar).

Shipping Assembly Part No.	Description
46250	Pressure Switch – DPST

Component	Material	Thread Size/Type	Electric Rating	Approvals
Pressure Switch DPST	Switch: BAKELITE Housing: Malleable Iron Piston: Brass	Conduit Inlet: 3/4 in. NPT Female Pressure Inlet: 1/4 in. NPT Female	2 HP – 240 VAC/ 480 VAC 2 HP – 250 VDC, 30A 250V AC/DC 5A 480V AC/DC	UL (EX-2968); Listed for use with FM Approved systems



BAKELITE is a trademark of Union Carbide Corp.